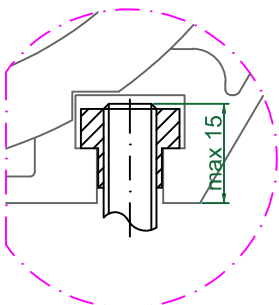
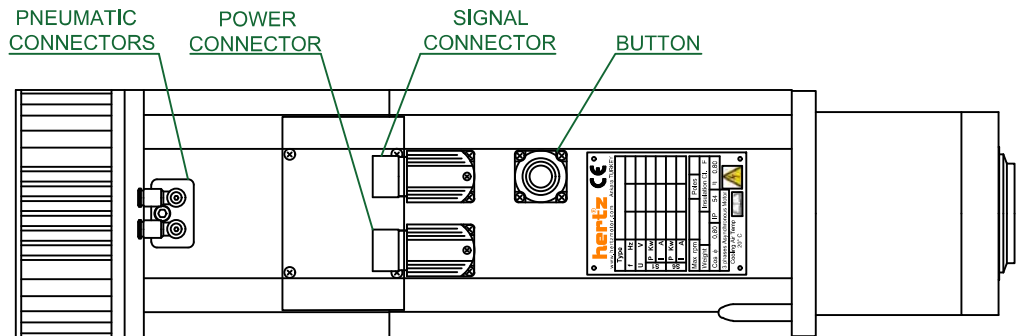


T-Slot Dimensions

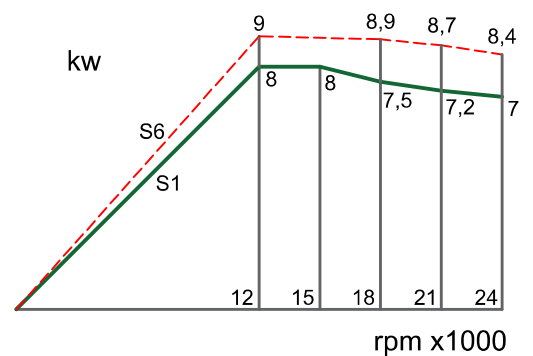


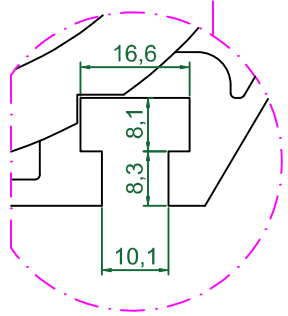
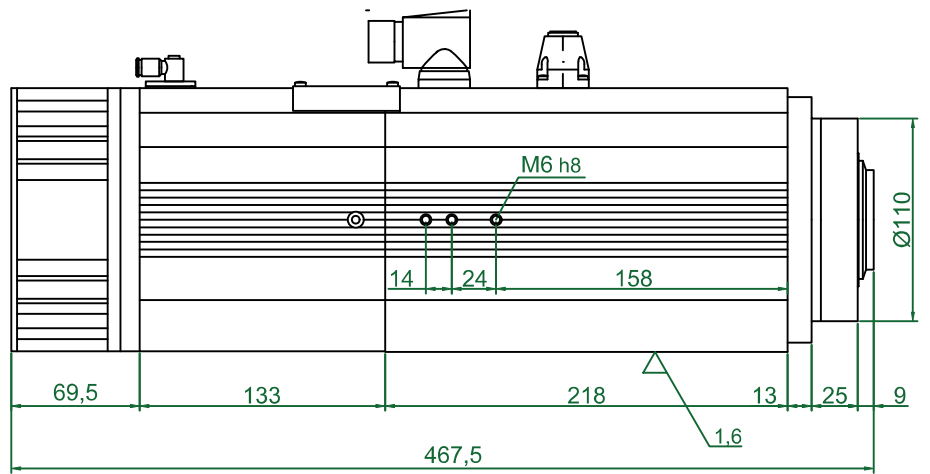
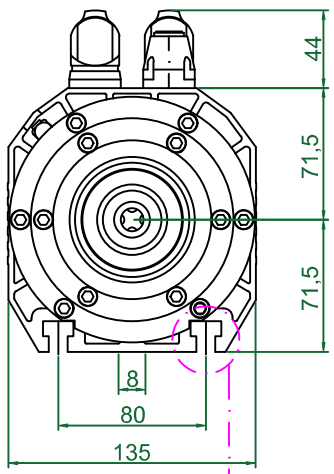
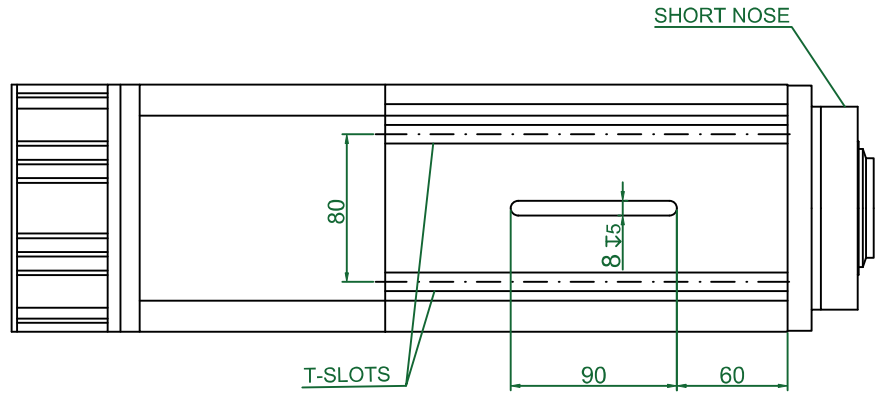
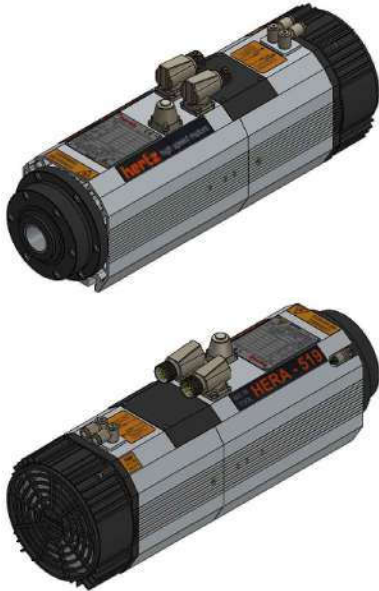
HERA 519_4.24.090.380

freq.	800 Hz	600 Hz	400 Hz	Poles	4	
Speed	24000 rpm	18000 rpm	12000 rpm	Ip	54	
Voltage	380 V	380 V	340 V	Cosφ	0,80	
S1	Kw	7,0 Kw	7,5 Kw	8,0 Kw	η	0,80
	A	14,5 A	15,2 A	18,2 A	Ins.CL	F
S6	Kw	8,4 Kw	8,9 Kw	9,0 Kw	3 ~ phases	
	A	17,8 A	18,8 A	20,1 A	Async. Mot	

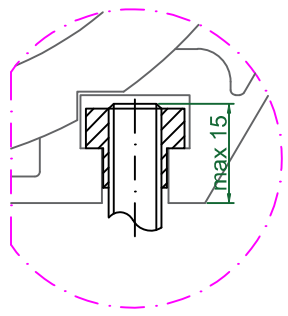
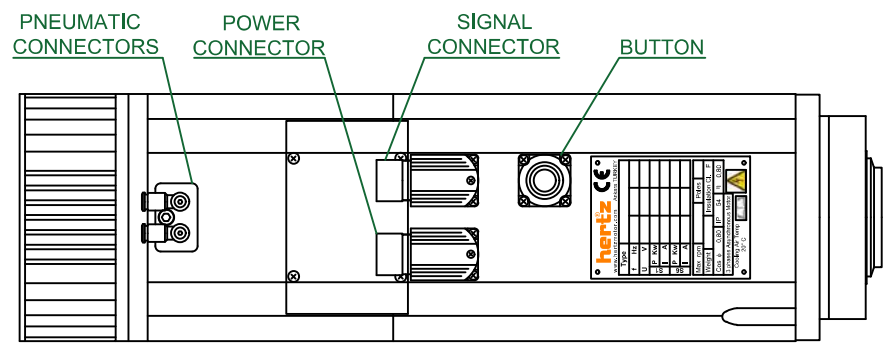
ELECTRIC FAN

Nominal Voltage	VDC	24
Power Consumption	W	17,5





T-Slot Dimensions

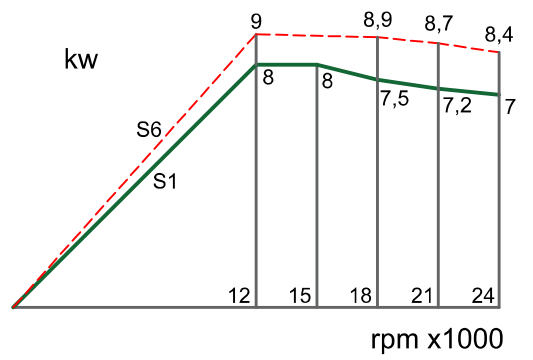


HERA 519_4.24.090.380

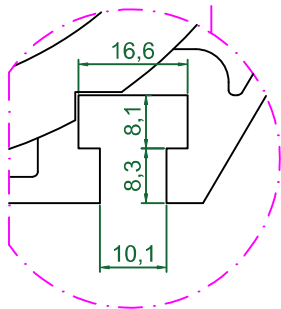
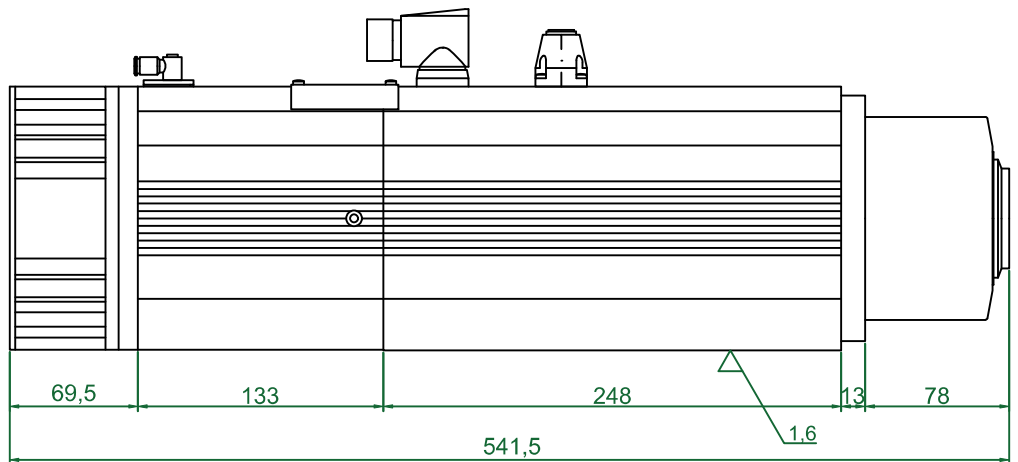
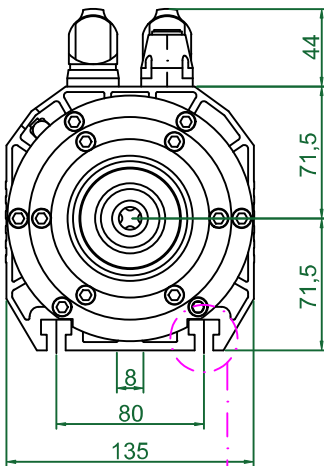
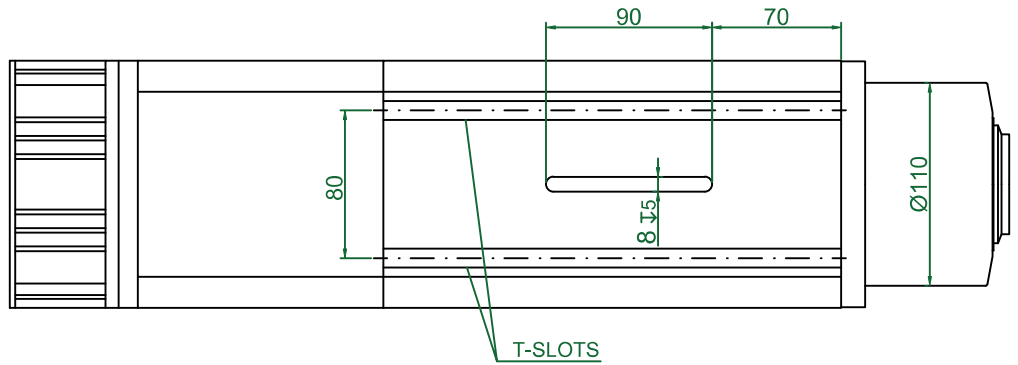
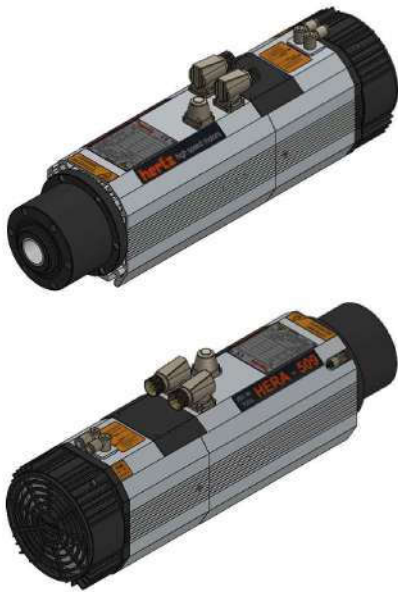
freq.	800 Hz	600 Hz	400 Hz	Poles	4	
Speed	24000 rpm	18000 rpm	12000 rpm	Ip	54	
Voltage	380 V	380 V	340 V	Cosφ	0,80	
S1	Kw	7,0 Kw	7,5 Kw	8,0 Kw	η	0,80
	A	14,5 A	15,2 A	18,2 A	Ins.CL	F
S6	Kw	8,4 Kw	8,9 Kw	9,0 Kw	3 ~ phases	
	A	17,8 A	18,8 A	20,1 A	Async. Mot	

ELECTRIC FAN

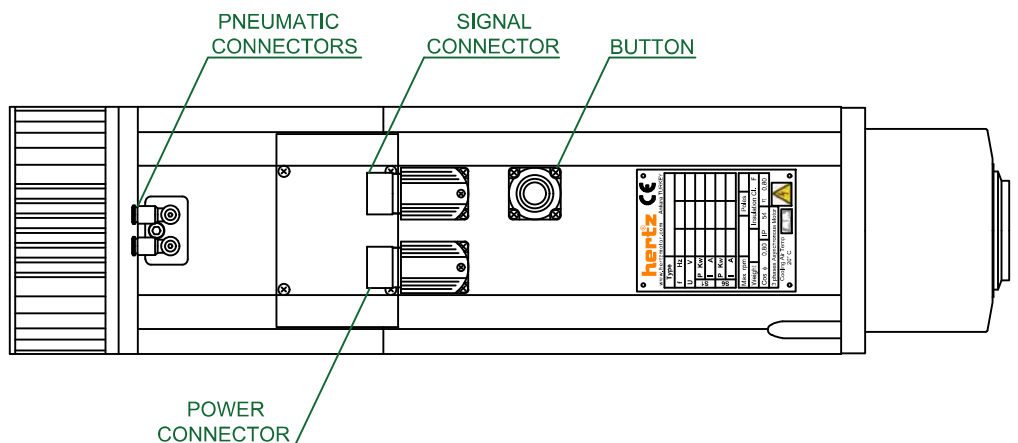
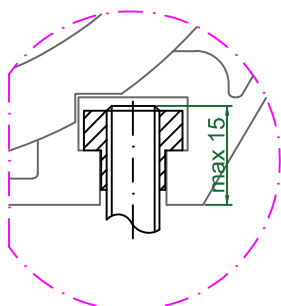
Nominal Voltage	VDC	24
Power Consumption	W	17,5



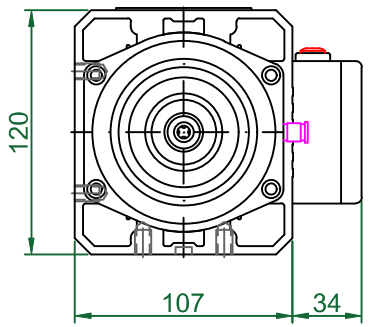
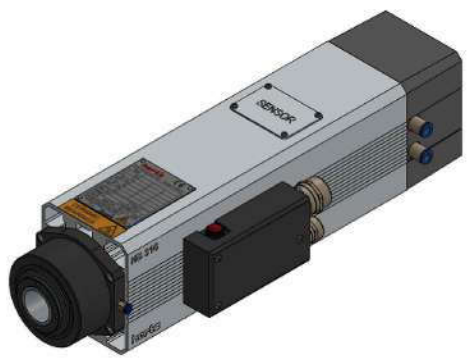
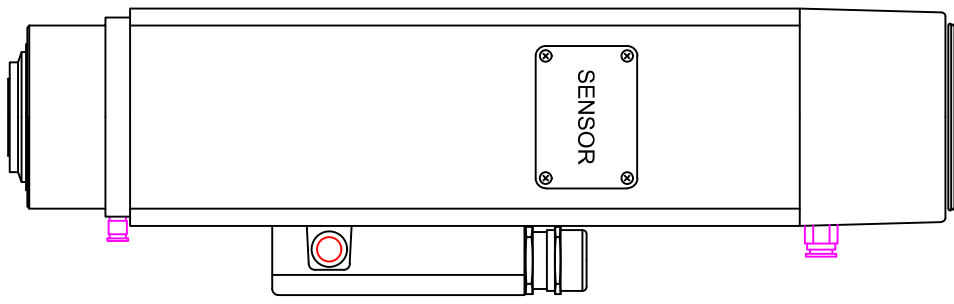
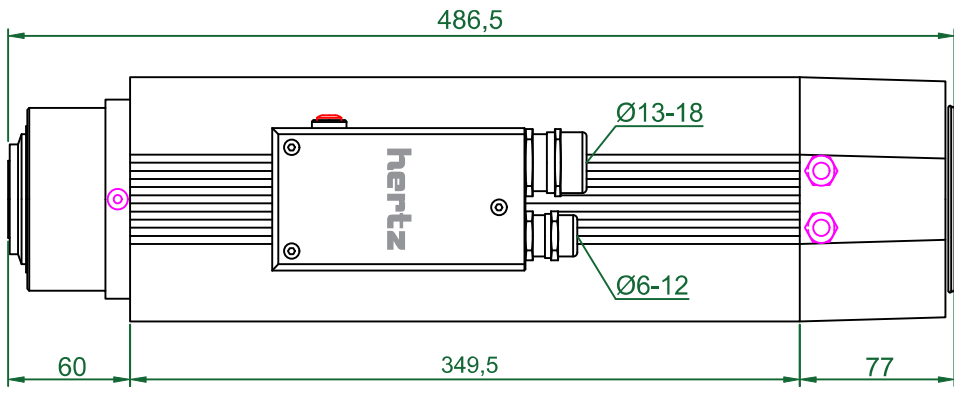
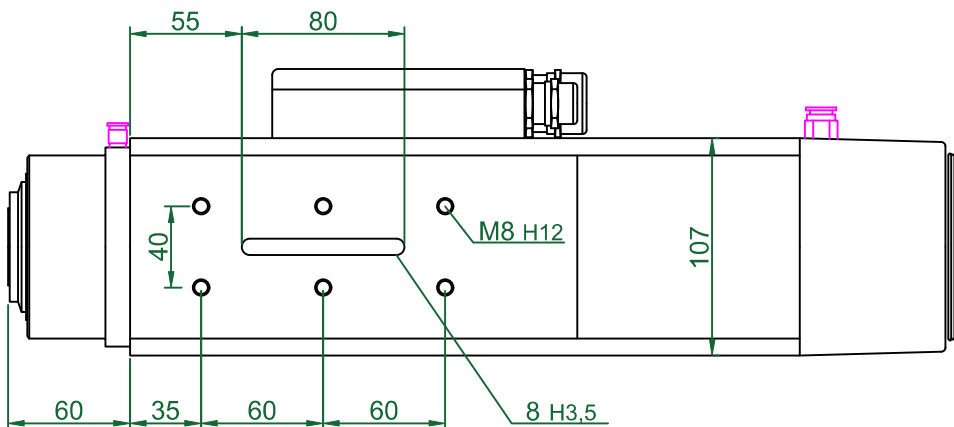
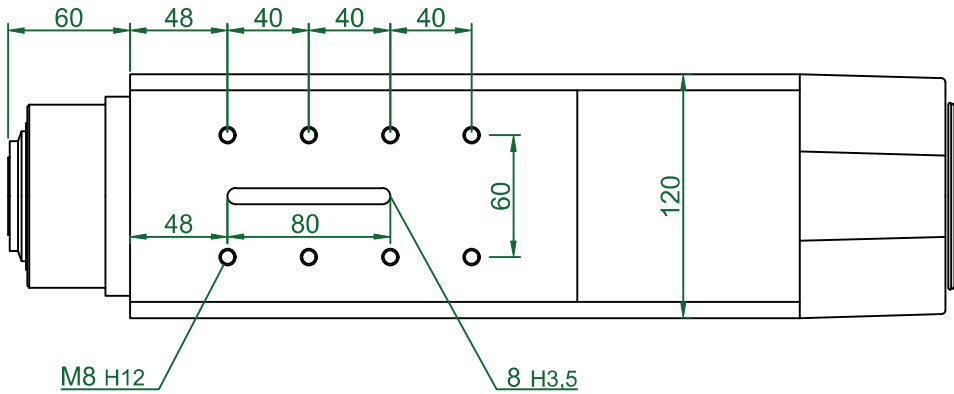
TYPE	MAX SPEED	BASE SPEED	MAX POWER (kW)		MAX FREQ.	VOLTAGE		COOLING FAN
	rpm	rpm	S6	S1	hz	BASE	OPTIONAL	VOLTAGE
HERA509_4.12.090.380_ISO30	12000	12000	9,0	7,5	400	380	220	DC 24 V.
HERA509_4.06.060.380_ISO30	6000	6000	6,0	5,5	200	380	220	DC 24 V.
HERA509_2.03.033.380_ISO30	3000	3000	3,3	3,0	50	380	220	DC 24 V.



T-Slot Dimensions



TYPE	MAX SPEED	BASE SPEED	MAX POWER (kW)		MAX FREQ.	VOLTAGE		COOLING FAN
	rpm	rpm	S6	S1	hz	BASE	OPTIONAL	VOLTAGE
HS316_2.24.055.380_ISO30	24000	18000	5,5	5,0	400	380	220	DC 24 V.
HS316_2.18.055.380_ISO30	18000	18000	5,5	5,0	300	380	220	DC 24 V.
HS316_4.12.050.380_ISO30	12000	12000	5,0	4,6	400	380	220	DC 24 V.
HS316_2.12.047.380_ISO30	12000	12000	4,7	4,3	200	380	220	DC 24 V.
HS316_4.06.040.380_ISO30	6000	6000	4,0	3,6	200	380	220	DC 24 V.
HS316_2.03.016.380_ISO30	3000	3000	1,6	1,4	50	380	220	DC 24 V.



TYPE	MAX SPEED	BASE SPEED	MAX POWER (kW)		MAX FREQ.	VOLTAGE		COOLING FAN
	rpm	rpm	S6	S1	hz	BASE	OPTIONAL	VOLTAGE
HS315_2.24.045.380_ISO30	24000	18000	4,5	4,0	400	380	220	DC 24 V.
HS315_2.18.045.380_ISO30	18000	18000	4,5	4,0	300	380	220	DC 24 V.
HS315_4.12.045.380_ISO30	12000	12000	4,5	4,0	400	380	220	DC 24 V.
HS315_2.12.040.380_ISO30	12000	12000	4,0	3,6	200	380	220	DC 24 V.
HS315_4.06.033.380_ISO30	6000	6000	3,3	3,0	200	380	220	DC 24 V.
HS315_2.03.015.380_ISO30	3000	3000	1,5	1,3	50	380	220	DC 24 V.

